

# EDUCATORS WASTE AWARENESS



E-NEWSLETTER

WASTE AWARENESS THROUGH EDUCATION

Spring has sprung! The days are longer and the weather is warming up. Help your students preserve our beautiful county by encouraging them to make waste wise choices. There are many different ways to decrease waste stream contributions. Need some ideas? [The Tehama County Solid Waste Management Agency](#) website offers local schools information on recycling, various free programs, and more!

## Did you know...

Debris in the ocean has formed giant garbage patches. The largest is the Great Pacific Garbage Patch. It contains an estimated 1.8 trillion pieces of trash and covers an area twice the size of Texas.

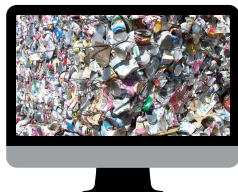
8 million metric tons are dumped into the ocean each year. That's 17.6 billion pounds or equivalent of nearly 57,000 blue whales.

Reports predict that on the current track, oceans will contain more plastic than fish by 2050.



**REMEMBER: EVERY ACTION MAKES  
A DIFFERENCE!  
SPREAD THE RECYCLING WORD!**

WHAT HAPPENS TO YOUR RECYCLABLES? CLICK THE COMPUTER SCREEN TO THE RIGHT TO SHOW YOUR STUDENTS WHERE THEIR RECYCLABLES GO AFTER THEY ARE PLACED IN A RECYCLING BIN.



We also have a waste awareness curriculum page on our website. The topics cover ecology, biology, economics, chemistry, mathematics, social studies, and more. The lessons are designed for grades 4-6, meet Golden State Standards, offer hands-on learning, and most importantly, they are FUN! Click [here](#) to view, download, and print lessons from the Agency website.

What's recyclable at your school?  
[City of Red Bluff,](#)  
[City of Tehama, & unincorporated](#)  
[Tehama County Schools](#)  
[City of Corning](#)  
[Schools](#)